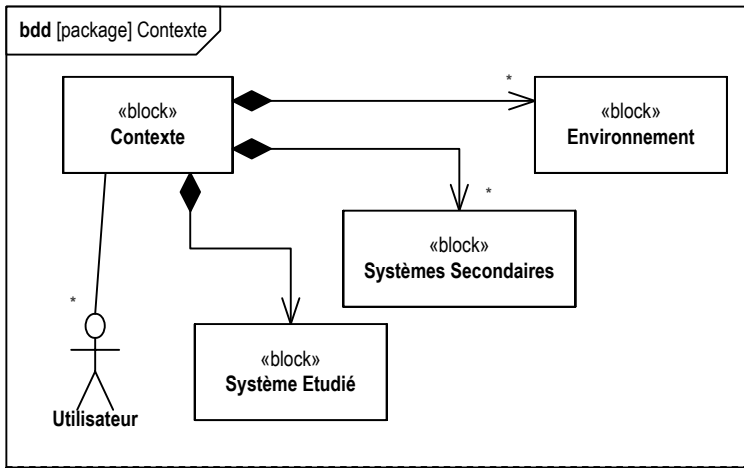
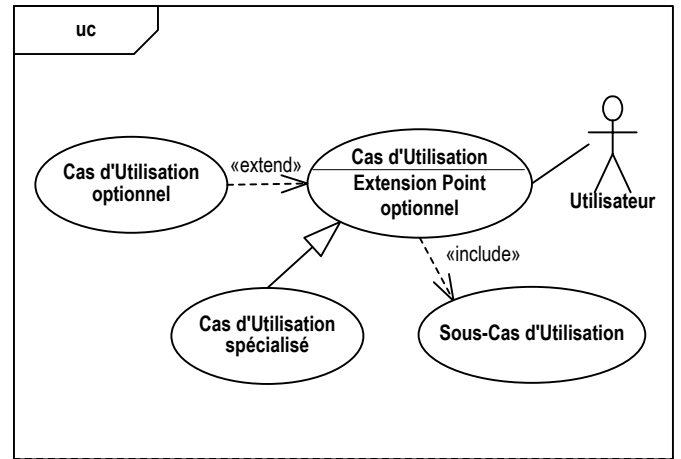


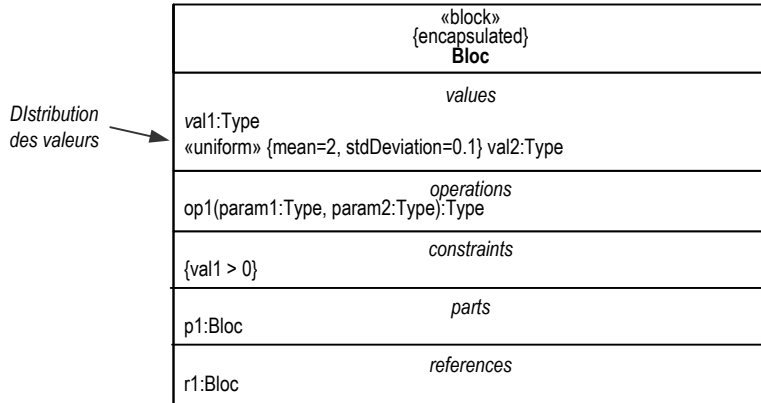
# Diagramme de Contexte



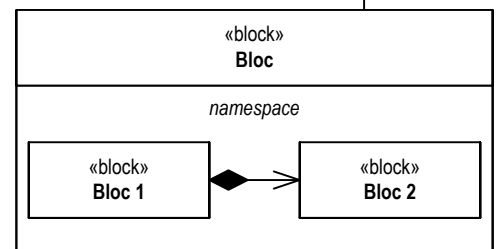
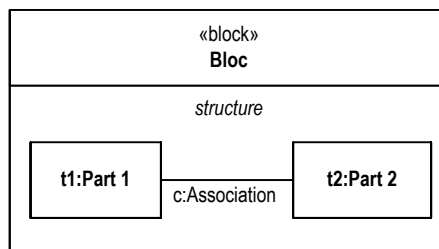
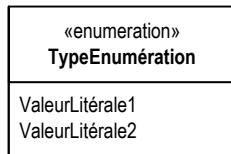
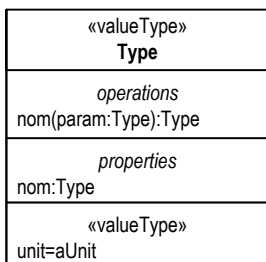
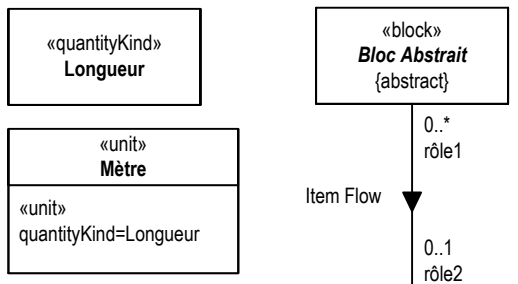
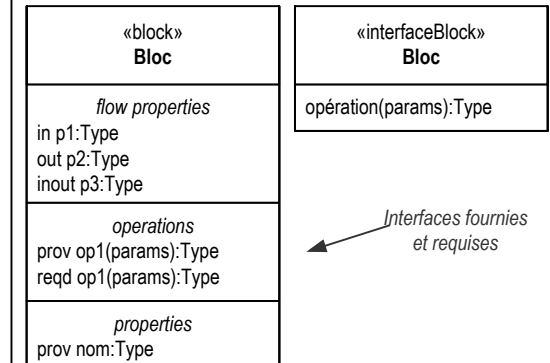
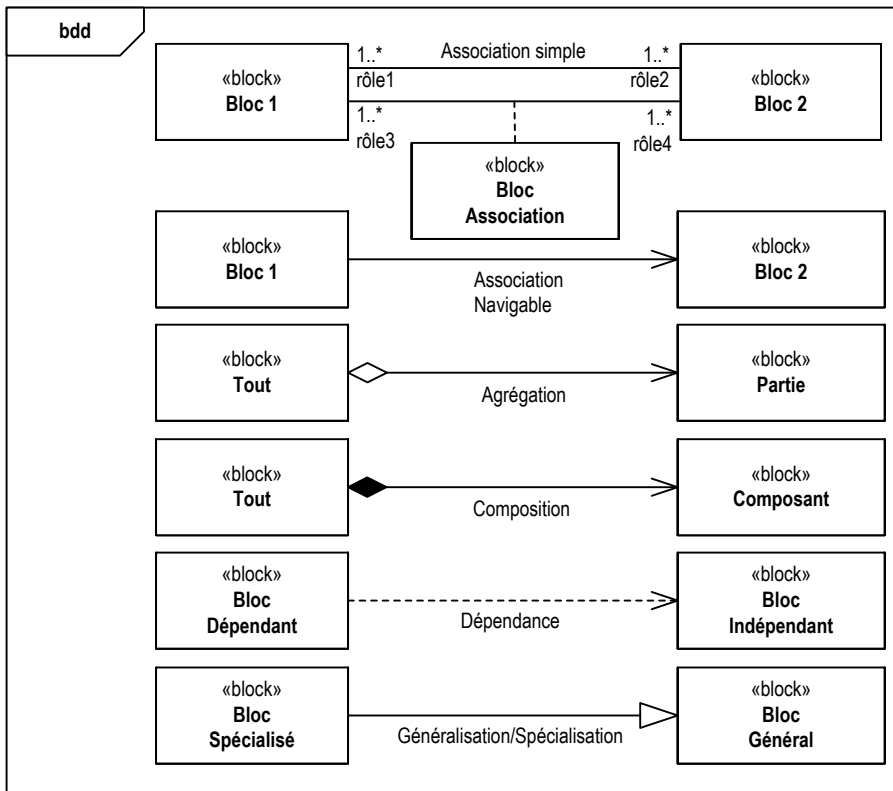
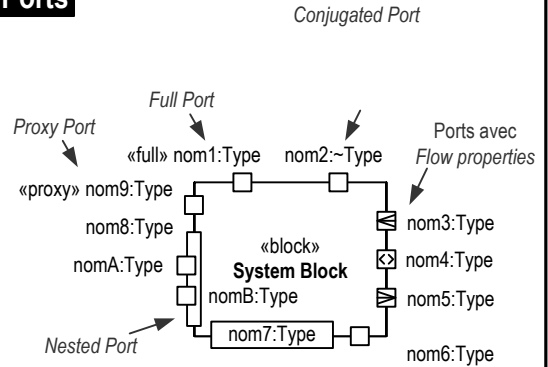
# Diagramme des Cas d'Utilisation



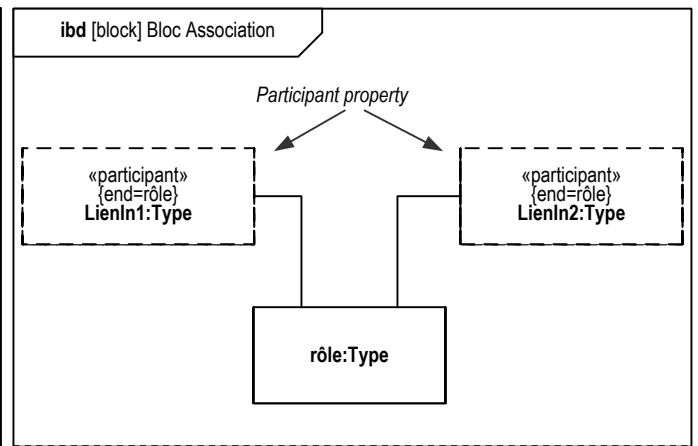
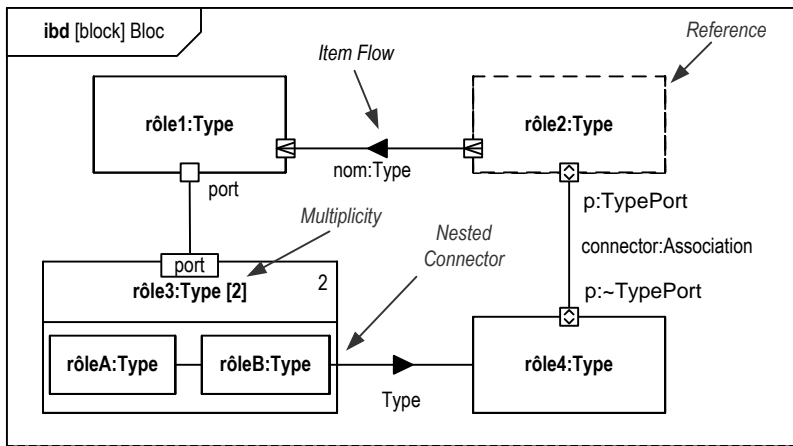
# Diagramme de Définition de Blocs



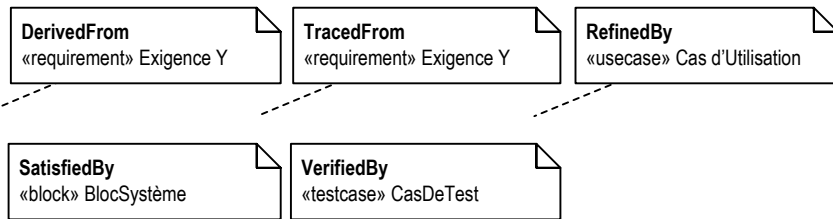
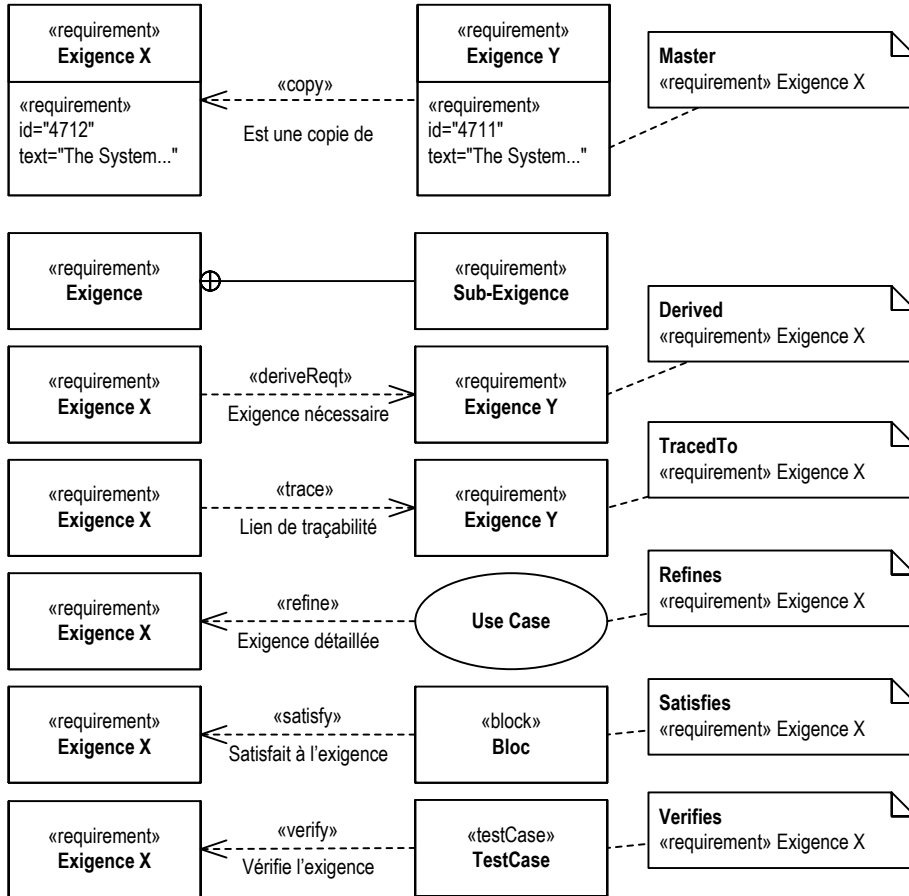
# Ports



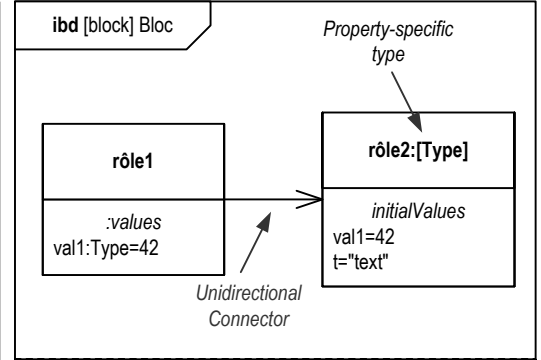
# Diagramme de Bloc Interne



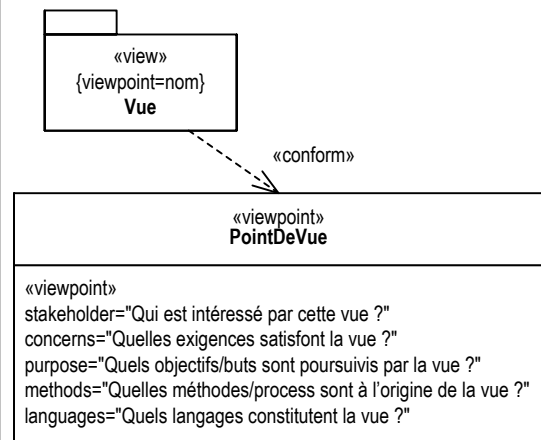
# Exigences



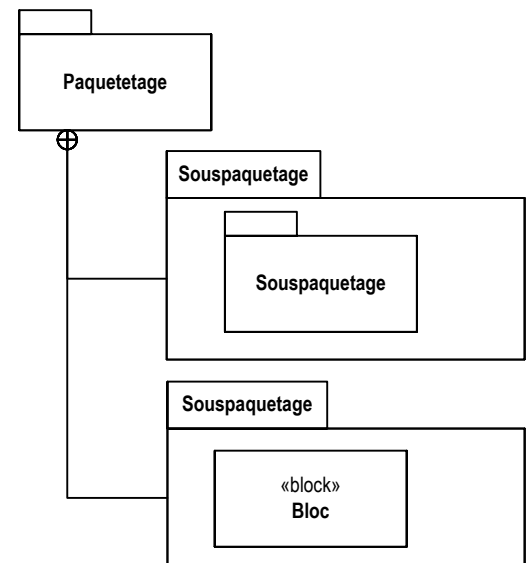
ID	nom	Texte
4711	Exigence X	Le système doit ...
...	...	...



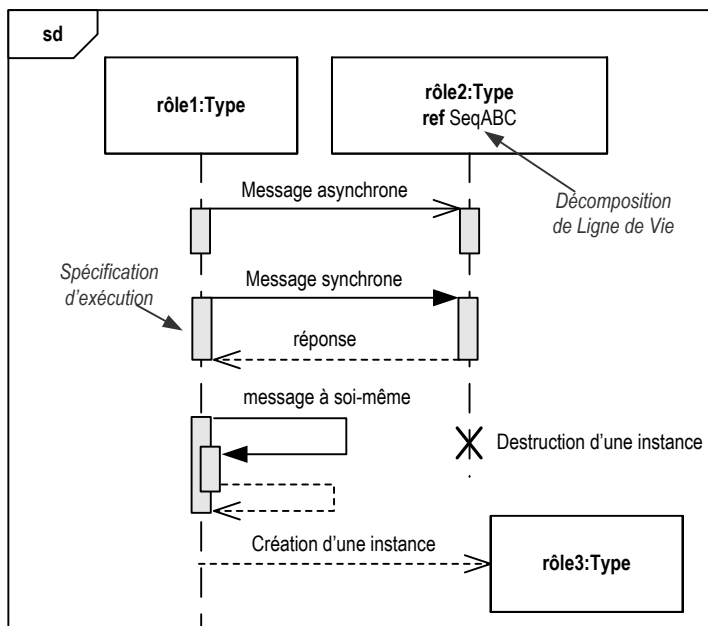
# Vues et points de vues



# Paquetages

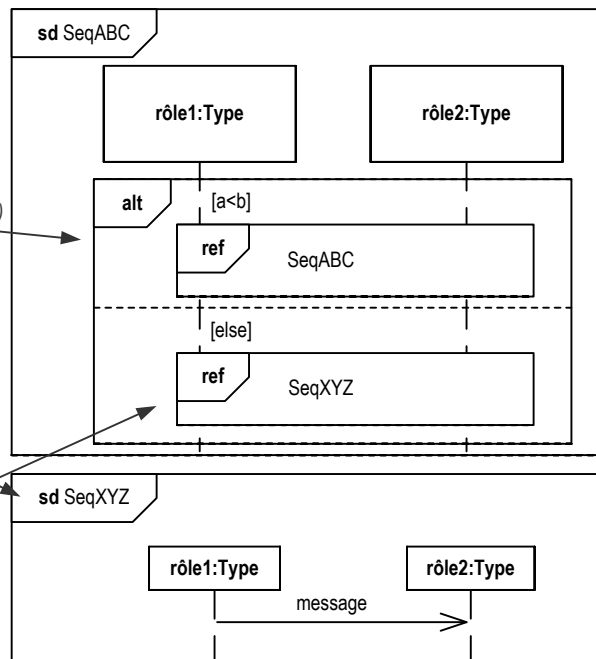


# Diagramme de Séquence

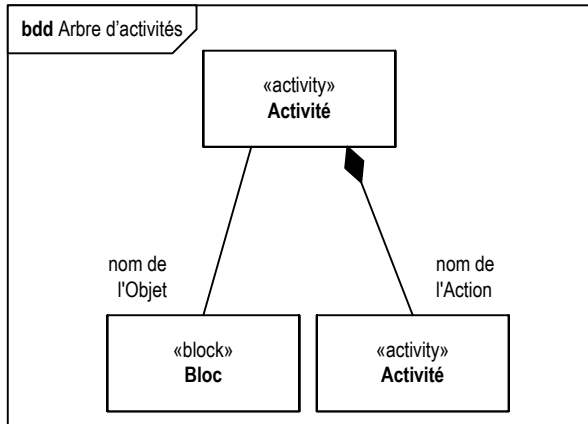
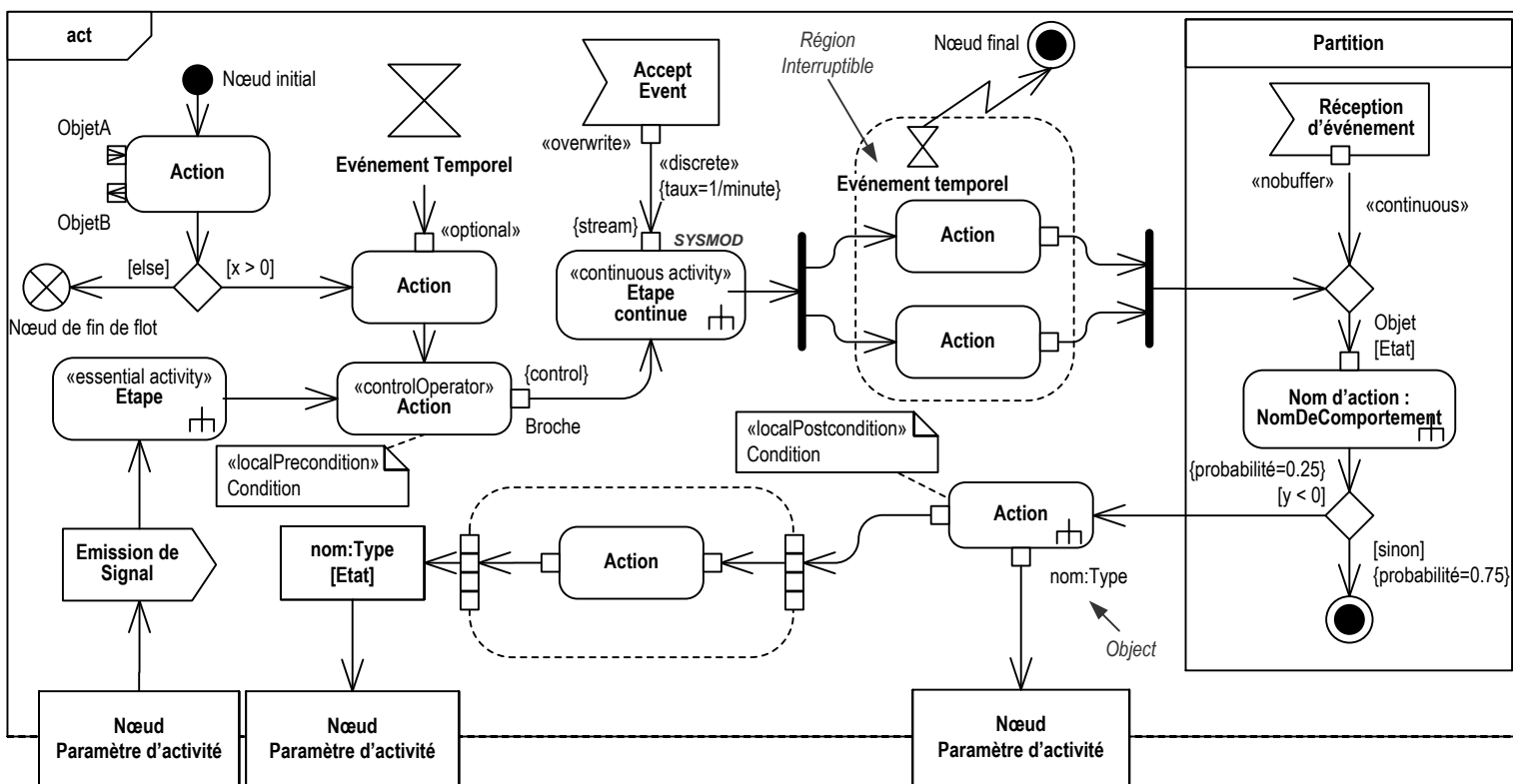


Fragments (alternatives)

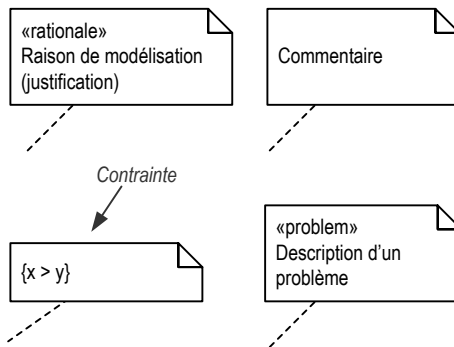
Réutilisation (référencement) du diagramme de séquence SeqXYZ dans un autre diagramme de séquence.



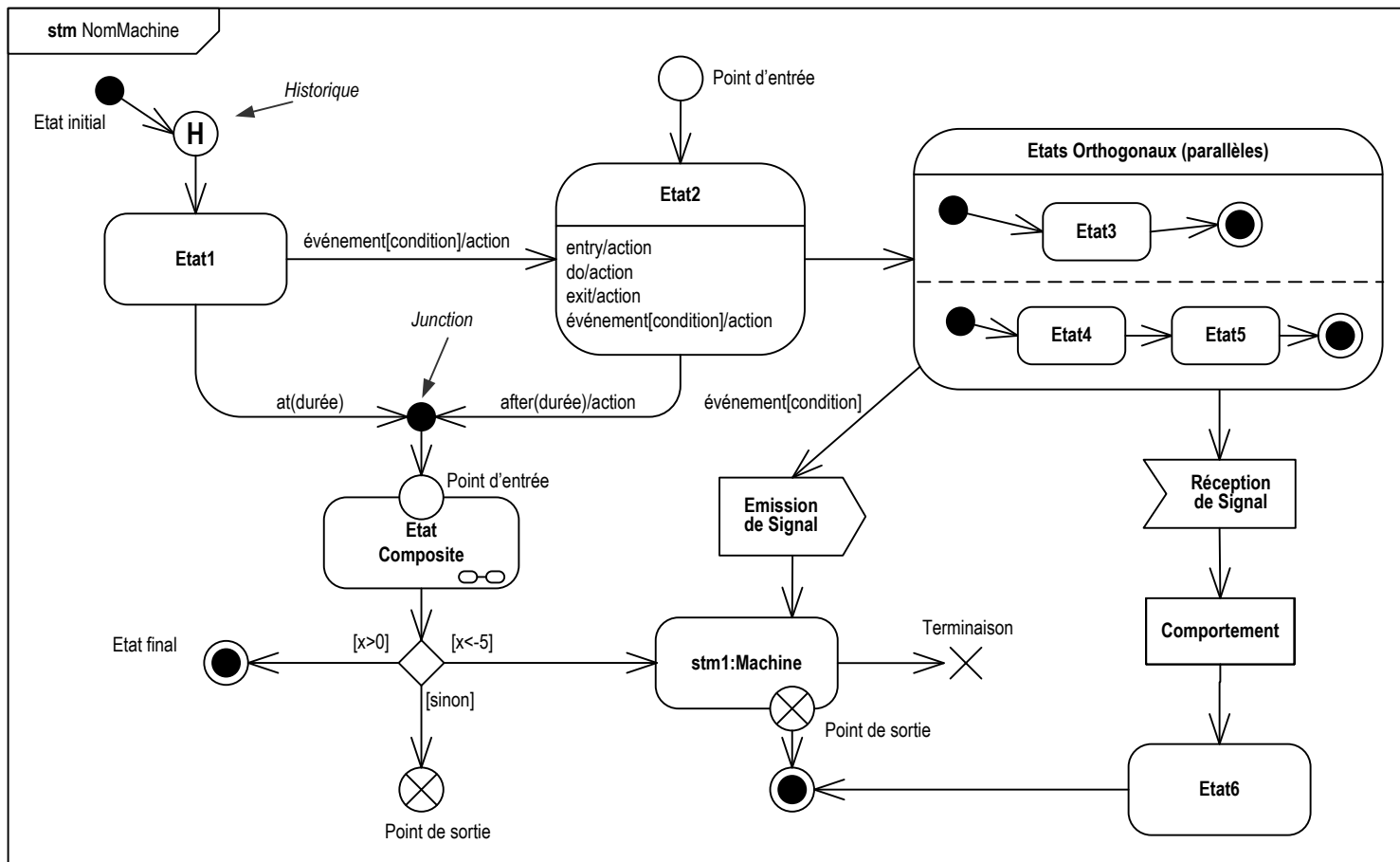
# Diagramme d'Activité



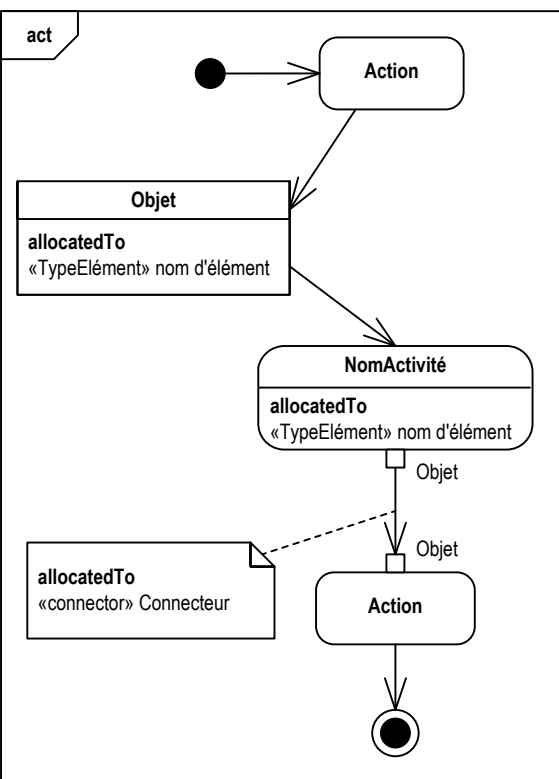
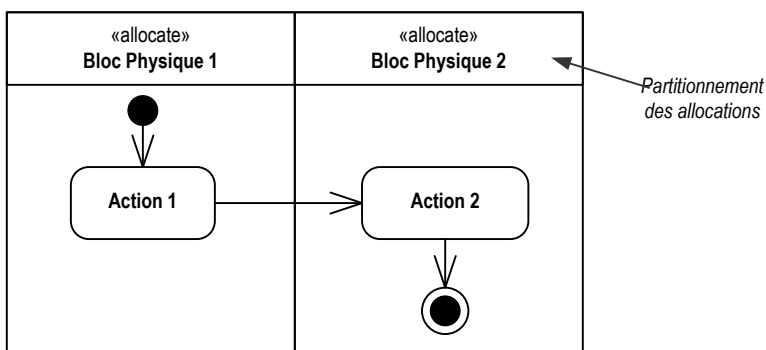
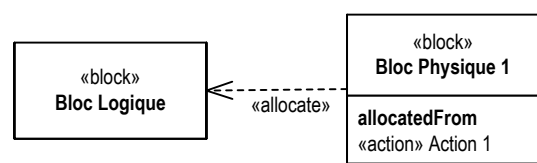
# Commentaires & Contraintes



# Machines à Etats



# Allocations



# Diagramme Paramétrique

